

PRESENTED BY JAKE AND JASON ZHANG

A Geologic Analysis of the McNinch Field, Ness and Trego Counties, KS

GEOLOGY 535
12.1.2017

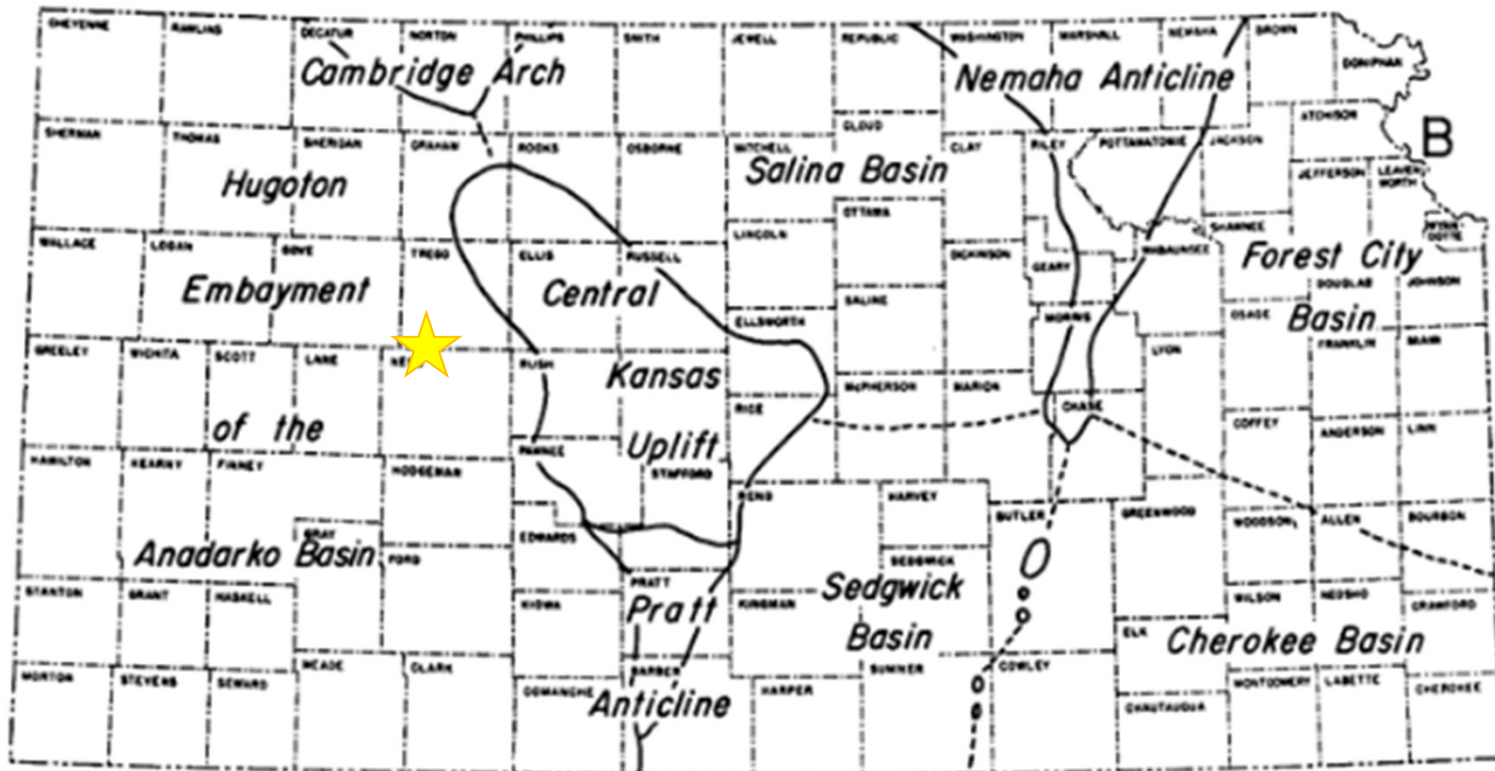
KU THE UNIVERSITY OF
KANSAS



Outline

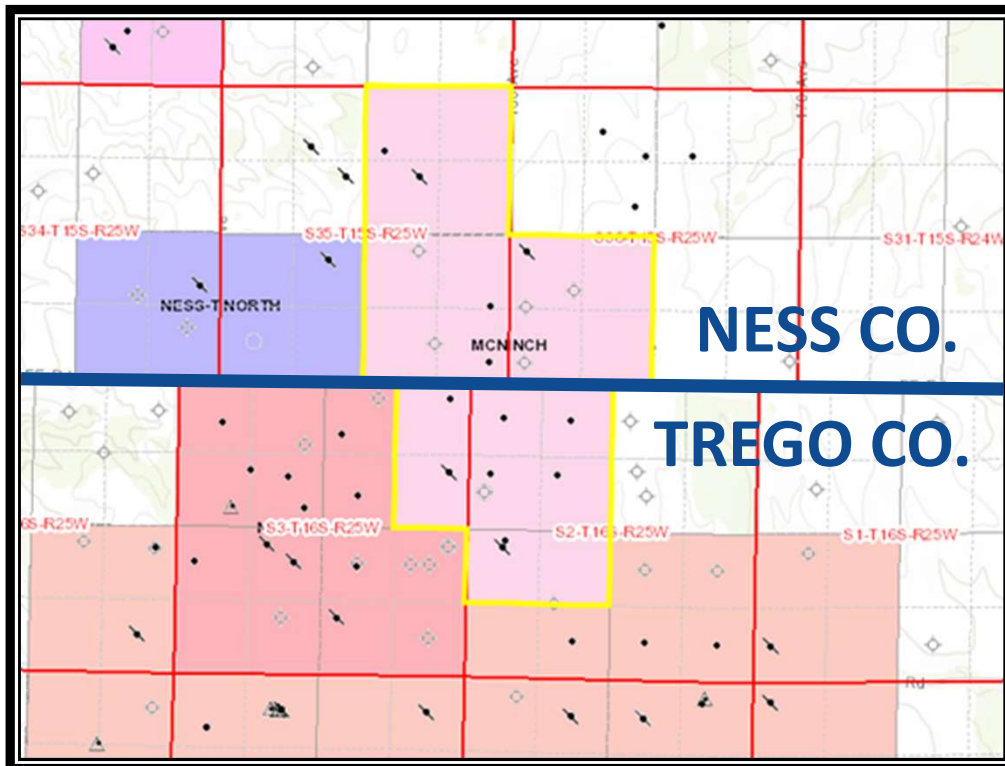
- Field location
- Brief petroleum system overview
- Field history
- Geologic setting
- Petrophysical parameters
- Production forecast
- Economics

MCNINCH FIELD LOCATION



Merriam, 1963

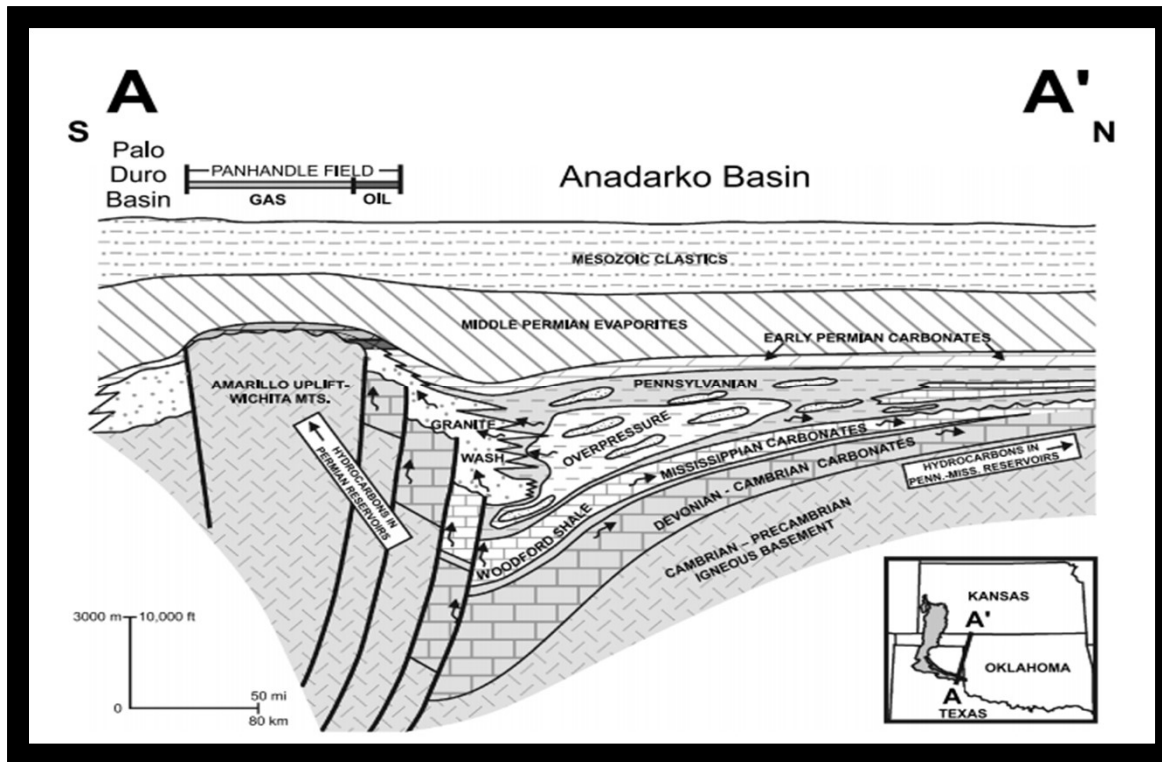
MCNINCH FIELD LOCATION CONT'D



KGS, 2017

- Spans ~800 geographic acres
- Sections:
 - 35-15S-25W
 - 36-15S-25W
 - 21-6S-25W
 - 3-16S-25W
- Data collected in surrounding sections
- Miss. Stages at surface
 - Osagian, Warsaw, Salem

BRIEF PETROLEUM SYSTEM OVERVIEW



SORENSEN, 2005

- Oil generated in southern OK, TX panhandle
- Woodford shale source rock
 - Possibly Springer sands
- Critical moment ~220-320 Million years ago
- Migrated through Mississippian system
 - TX, OK, KS, NE
- Not all oil migrated north



FIELD HISTORY

Field Inception

- First oil production in 1987
 - Double Eagle Exploration Co., LLC's McNinch 'B' 1
 - 24-hr IP: 130 STB/day (field record)
 - 4 total wells (75% success rate)

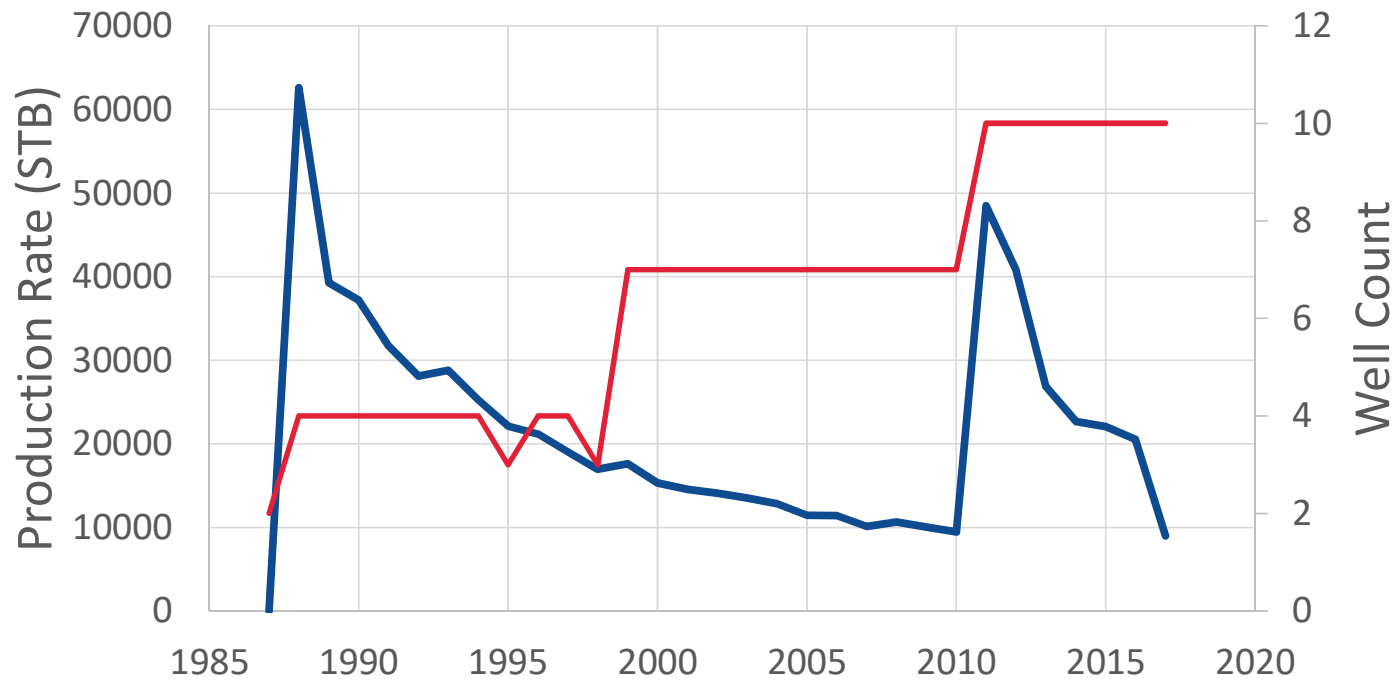
Drilling Campaigns

- 7 step-out wells drilled in 1988 (86% success rate)
- 2 wells drilled in 1989 (50% success rate)
- 3 wells drilled in 1990 (67% success rate)
- 4 wells drilled in 2010
 - 1 D&A (Double Eagle), 3 Oil (Palomino Petroleum, Inc.)



VISUAL FIELD HISTORY

Decline Curve - McNinch Field (1987-2017)

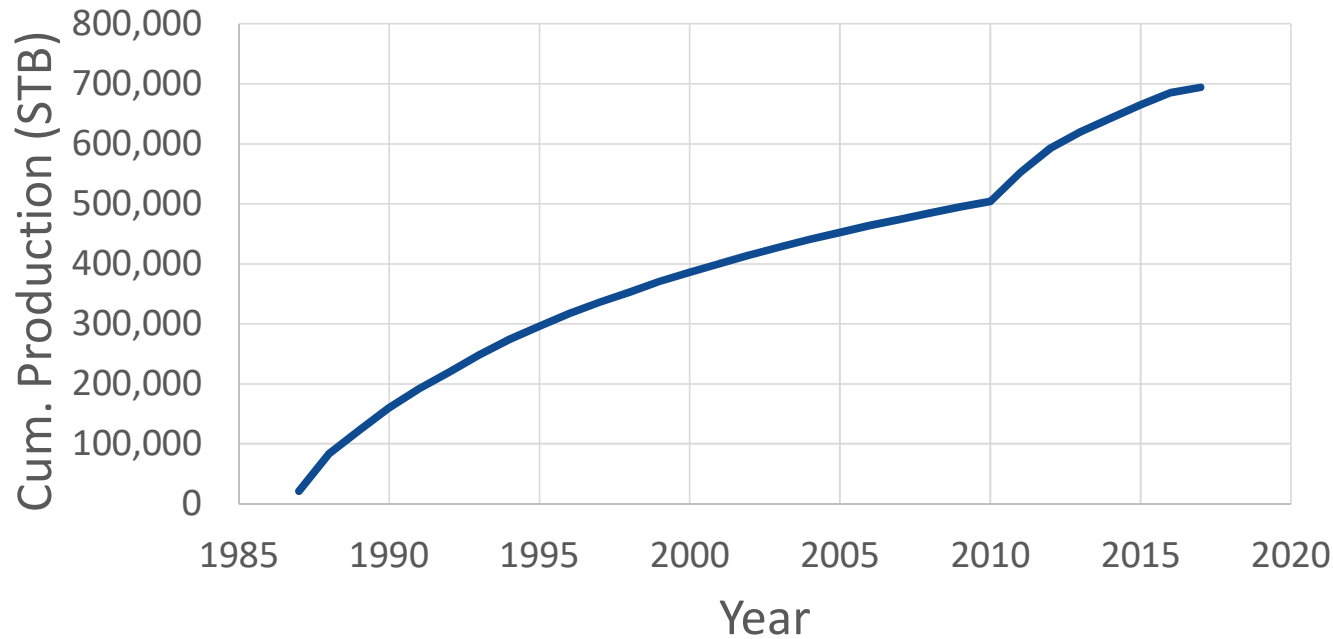


Year
KGS Data, 2017



PRODUCTION HISTORY

Cumulative Oil Production - McNinch Field
(1987-2017)



KGS Data, 2017

- **Cum Production To-Date:**
694,099 STB
- **OOIP: 2,720,022 STB**
 - **RF: 26%**

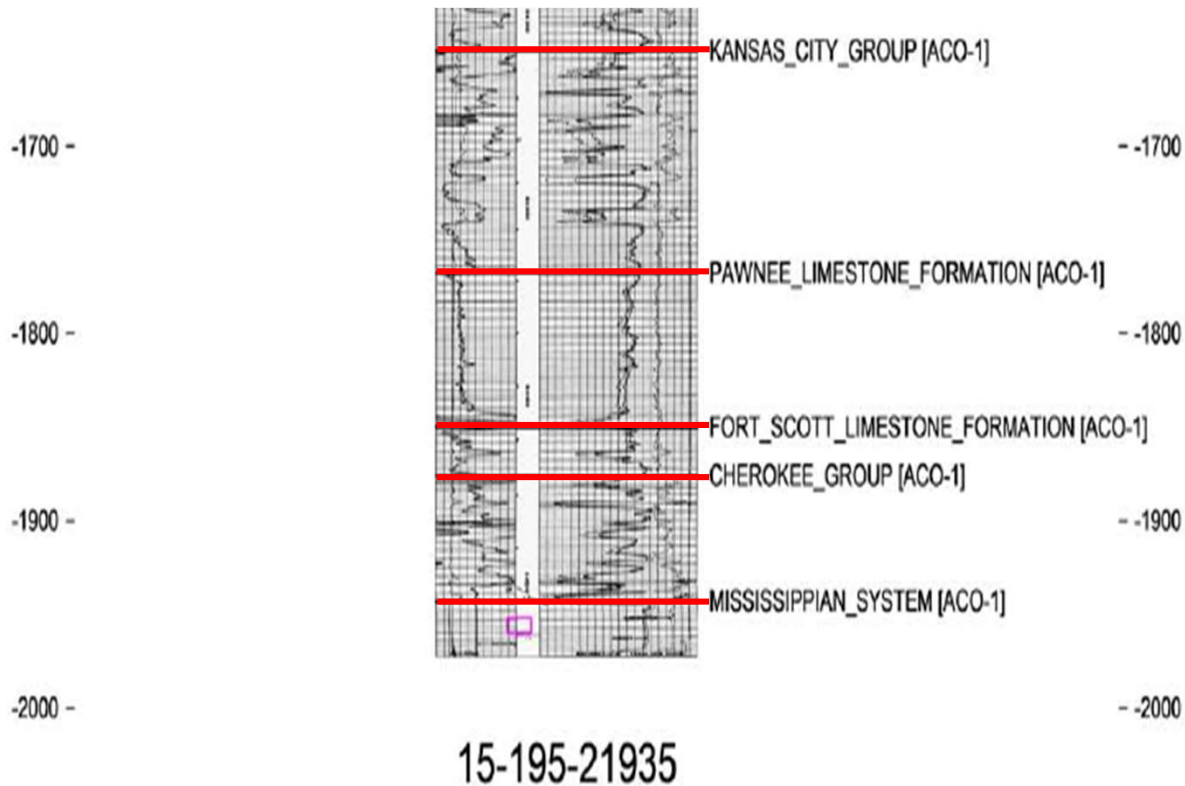
GEOLOGIC SETTING

- Western flanks of Central Kansas Uplift
- Upper Mississippian dolomite production
 - Cherokee group seal
- Karst structure anticlines
 - Doline initiated
- Actual stage within Mississippian system unknown

System	Series	Stage	Group	Formation
Pennsylvanian	Middle Pennsylvanian	Desmoinesian Stage	Marmaton Group	Pawnee Limestone
				Anna Shale Mbr.
				Labette Shale
			Ft. Scott Limestone	
			Cherokee Group	
Mississippian	Lower Mississippian	Chesterian Stage		
		Meramecian Stage	Ste. Genevieve	
			St. Louis	
			Salem	
			Warsaw	
Osagean Stage				
Kinderhookian Stage				

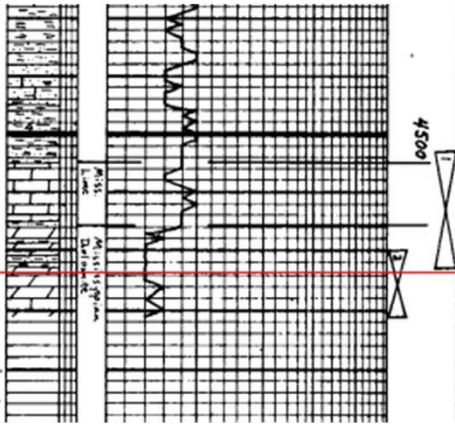
Ramaker, 2009

TYPELOG

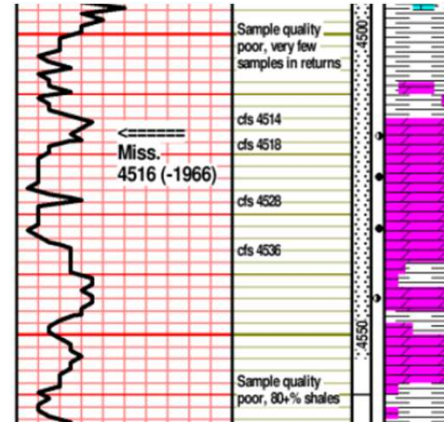


- Kansas City Group down
- Shows difficulty in obtaining log data for Mississippian
- Open-hole Miss. Production
 - Pennsylvanian shale seal above
 - Sporadic chert/conglomerate above shale

GEOLOGIC FACIES



- 15-135-22830
- Perfs at 4523-4531 ft(TVD)
- Upper seal shale
- Lower seal shale
- Trap Mississippian dolomite

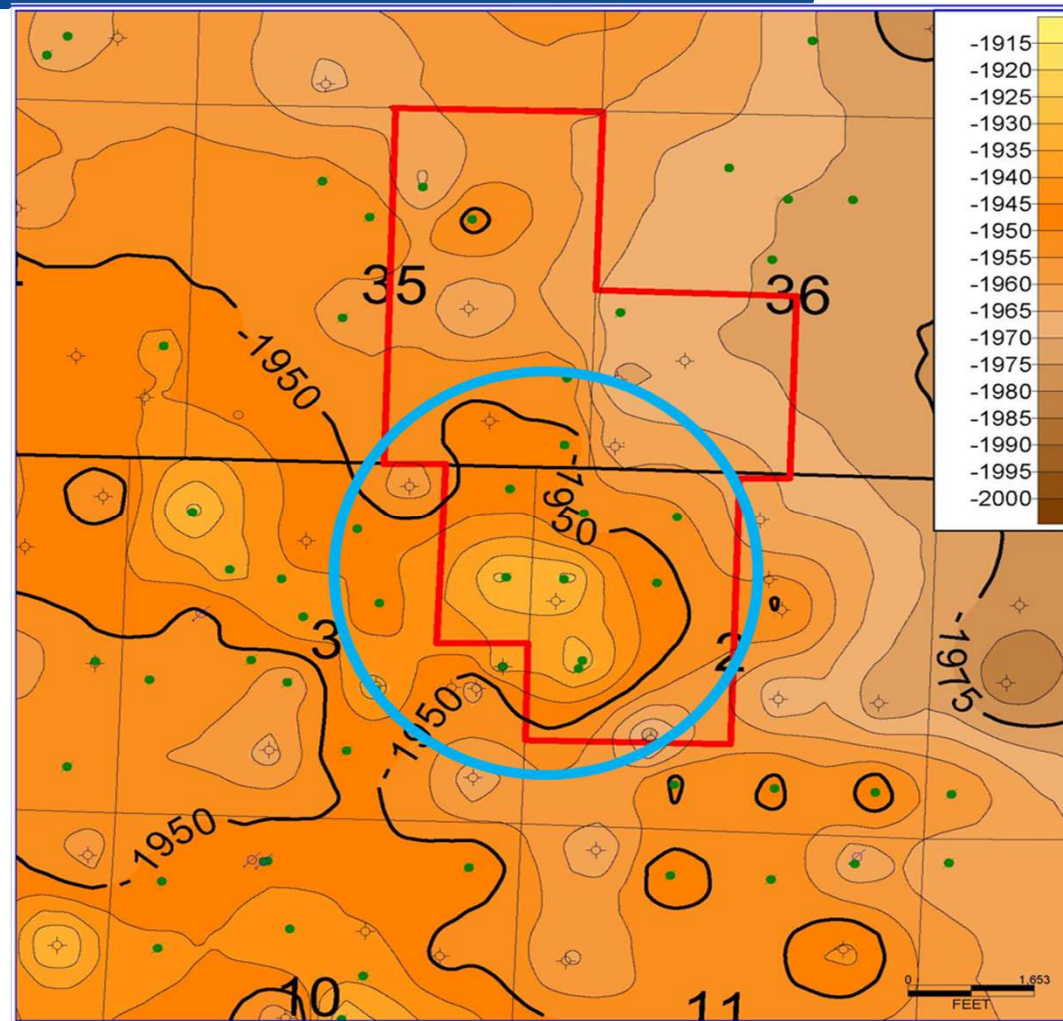


- 15-195-22984
- Perf at 4501-4526 ft(TVD)
- Upper seal shale
- Lower seal shale
- Trap Mississippian dolomite

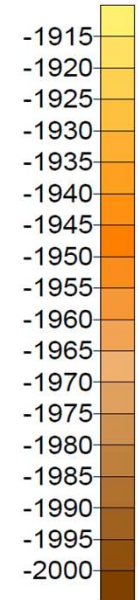
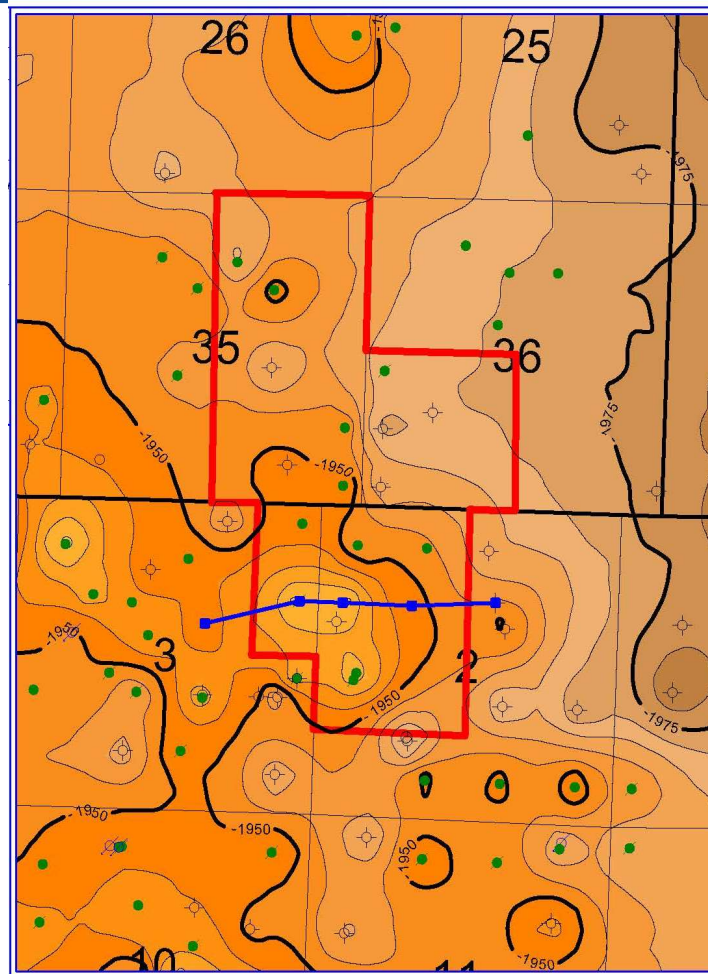
Mississippian System:

- Upper 8-10 ft limestone
- Remainder dolomite (main producing stages)
 - Finely crystalline
 - Fossiliferous
 - Fair to good vugular porosity
 - Possibly fossil-cast
 - Fair permeability

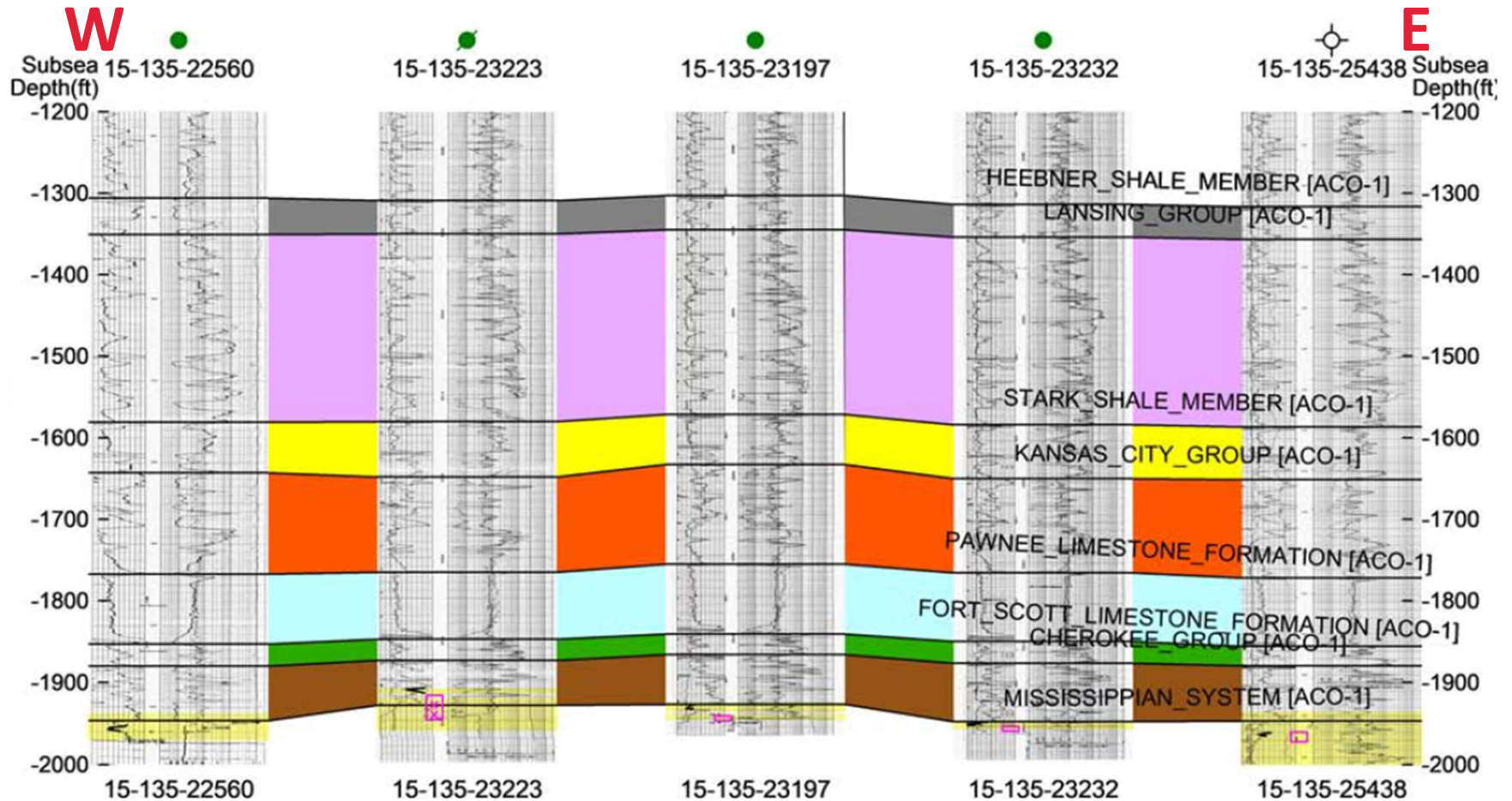
KARST STRUCTURES IN MCNINCH FIELD



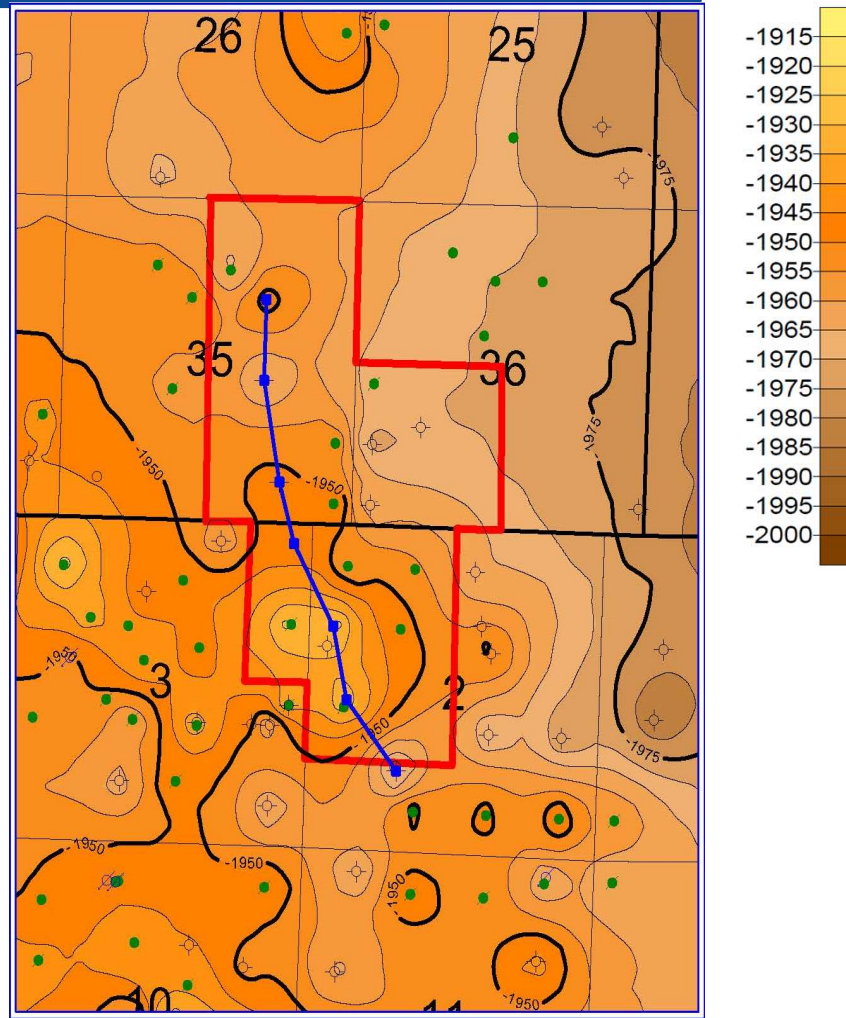
MAP VIEW OF E-W CROSS-SECTION



E-W CROSS SECTION OF MCNINCH FIELD

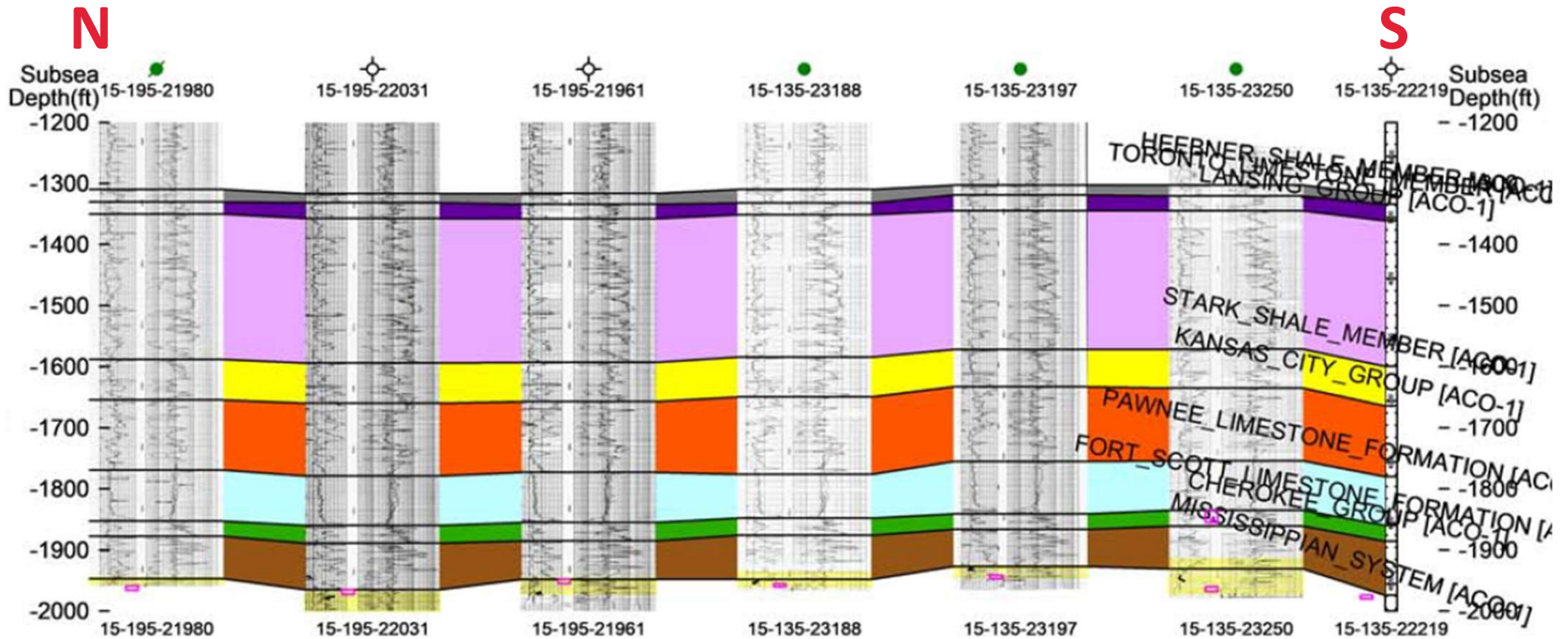


MAP VIEW OF N-S CROSS-SECTION



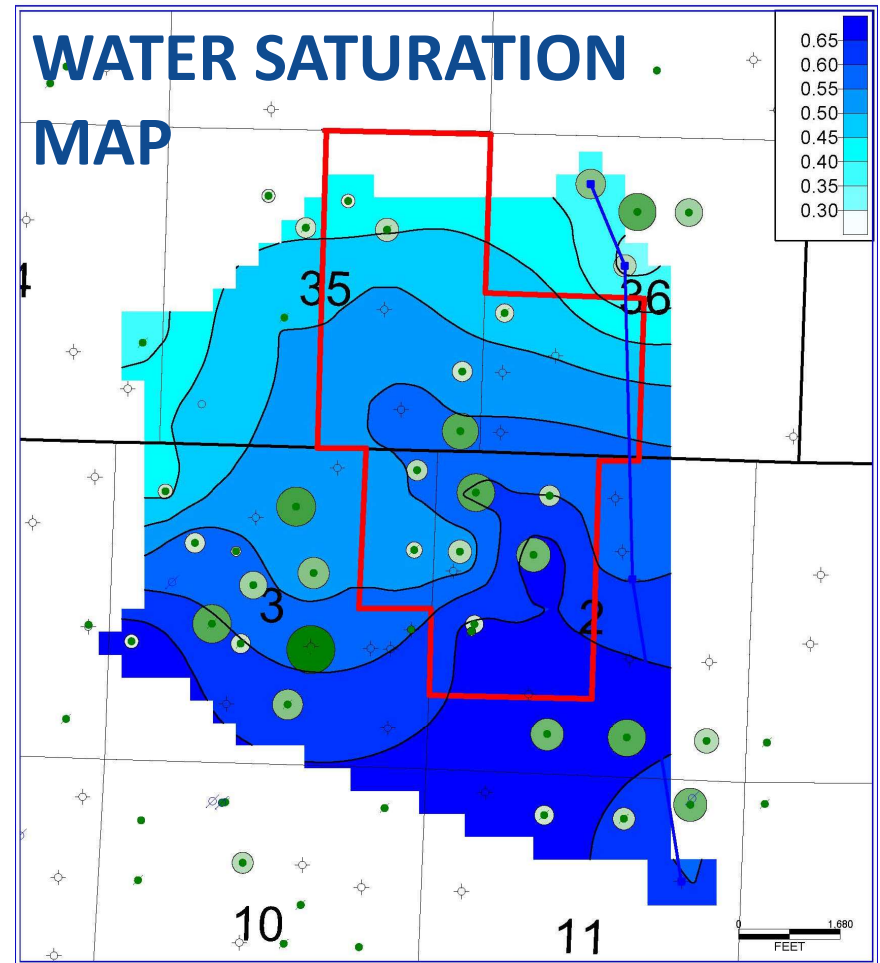
DETD 11/01/2017 5:01:30 PM

N-S CROSS SECTION OF MCNINCH FIELD

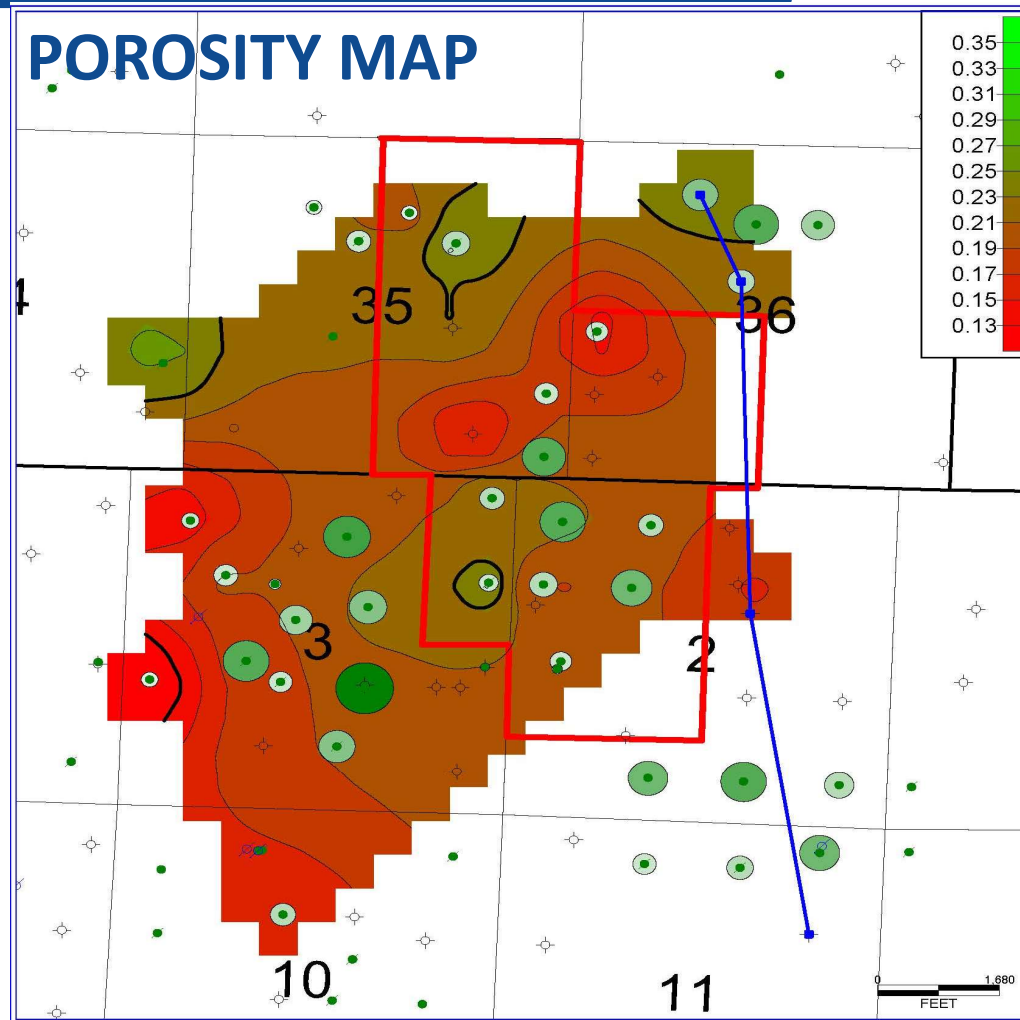


PETROPHYSICAL PARAMETERS

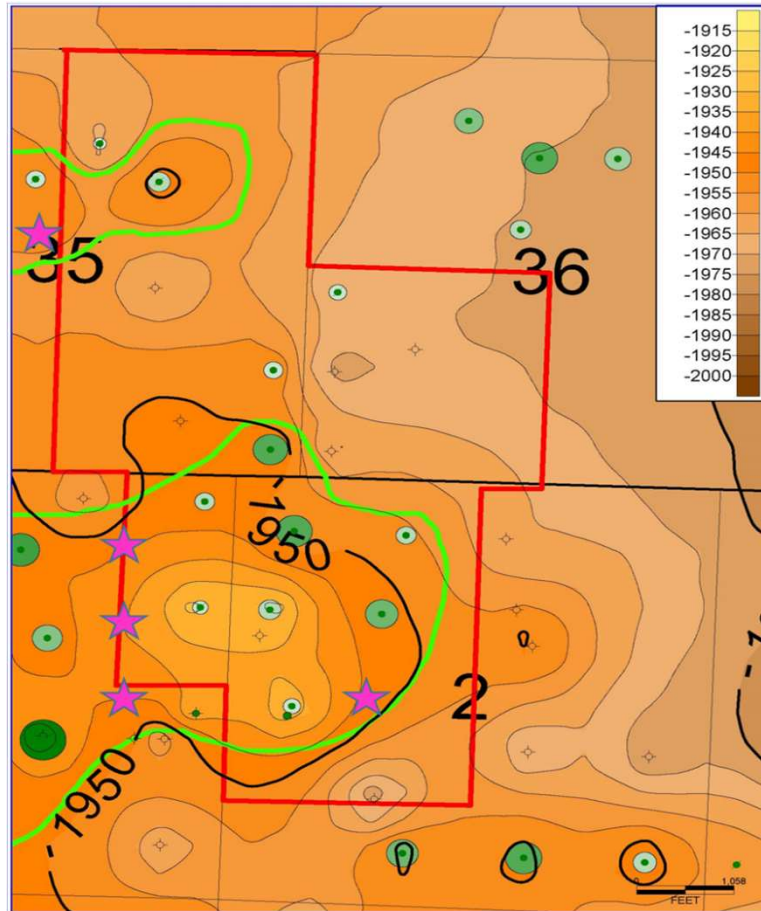
- Mean Sw: 47%
 - High: 68%
 - Low: 18%
- Mean Φ : 22%
 - High: 35%
 - Low: 13%
- IP Bubbles
 - Correlate w/ Sw
 - Correlate w/ Φ
- OOIP: 2,720,022 STB



PETROPHYSICAL PARAMETERS CONT'D



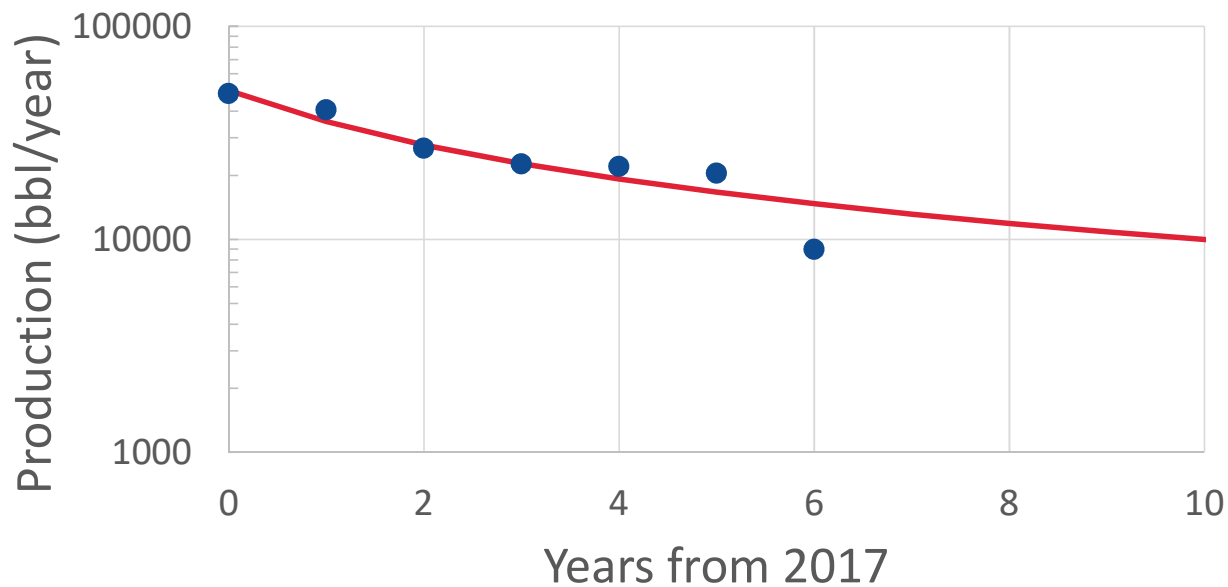
FIELD POTENTIAL



- Water Oil Contact at ~1960ft
- Determined location of main structural traps within field
 - WOC between:
 - Lowest oil producing wells
 - Highest water producing wells
 - Dry holes within boundary Ft. Scott wells
- Purple stars denote potential future field step-out locations
 - Likely only possible if boundaries expanded

PRODUCTION FORECAST

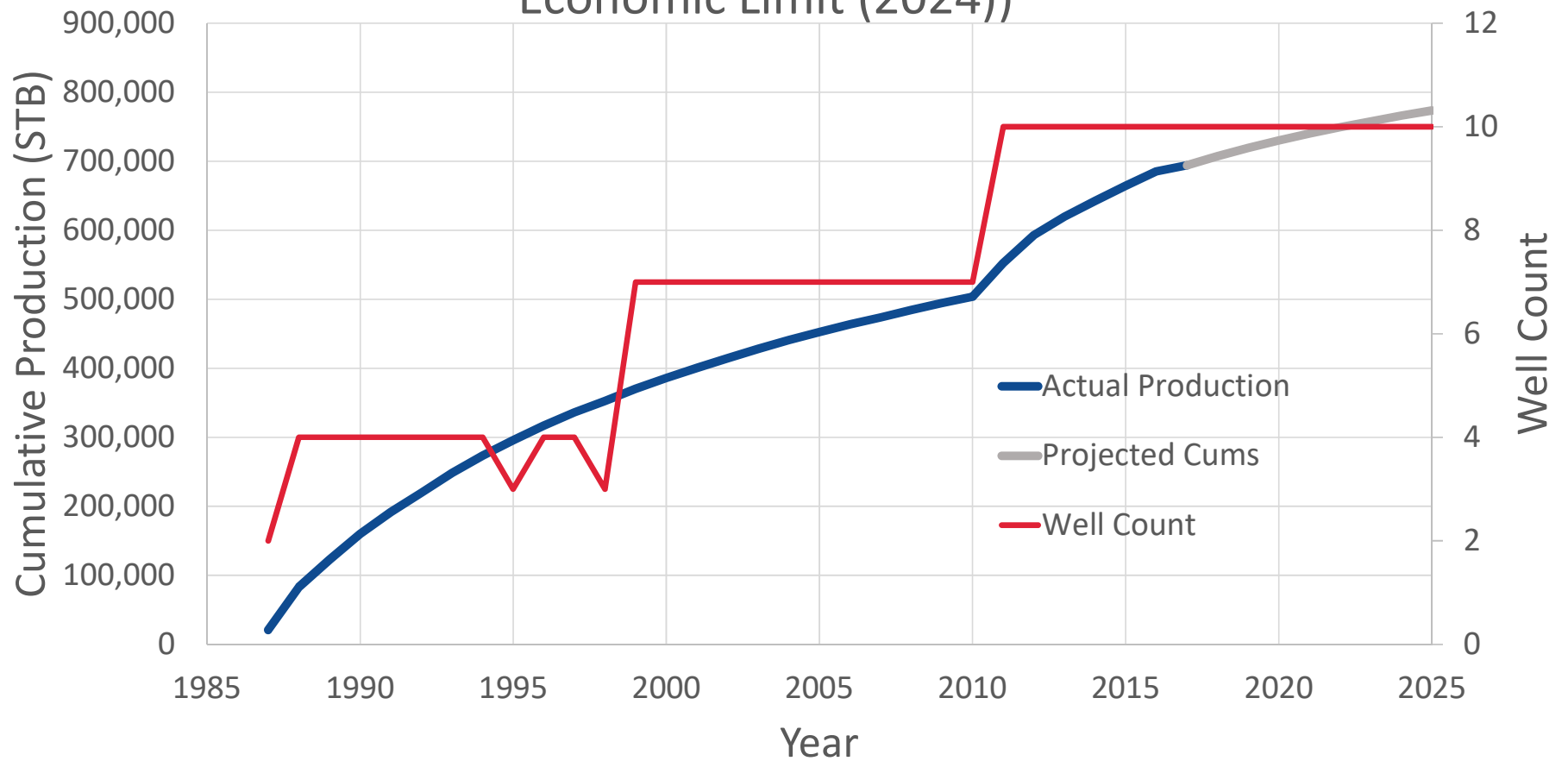
McNinch Field Decline Curve 2017-
Future



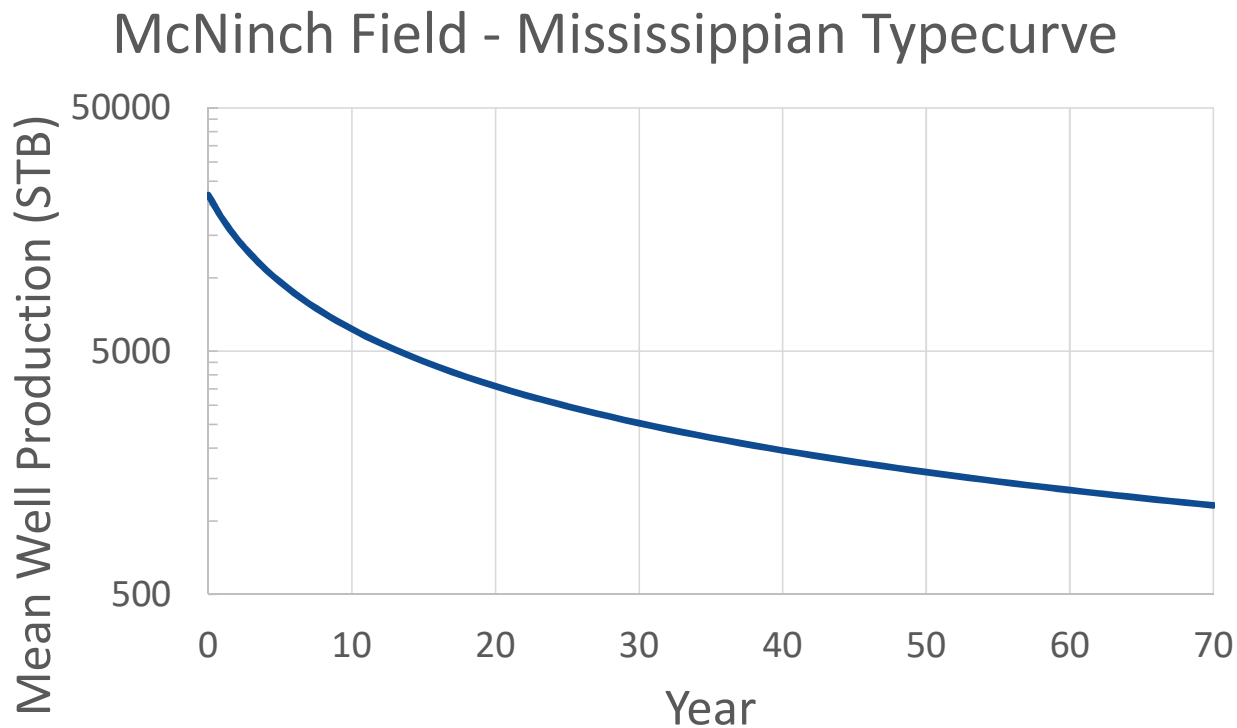
- Arp's Equation Parameters:
 - Q_i : 50,000 STB/d
 - d : 0.4
 - b : 1 (harmonic)
- Based off current field configuration
- Econ Limit: 2024 (7 years)
- EUR: 773,551 STB
- RF_{2024} : 28%

UPDATED CUMULATIVE OIL PRODUCTION

Cumulative Oil Production - McNinch Field (1987- Economic Limit (2024))



MCNINCH FIELD MISSISSIPPIAN TYPECURVE



- Yearly decline curve
 - McNinch Field
 - Mississippian wells
- Determination
 - Q_i : Mean 24-hr IP
 - Mult. By 365
 - d : Mean field decline
 - Constant well count
 - b : 1 (harmonic)

MCNINCH FIELD ECONOMICS

- Field value from cumulative production to-date in today's dollars

Discount Rate	Econ. Limit (Years)	Econ. Limit per well (bbl/day)	Value (\$)
PV0	38	4	\$ 15,578,292
PV10	38	4	\$ 6,217,568
PV20	38	4	\$ 3,831,696
PV30	38	4	\$ 2,663,787

- Incremental economics for production forecasted 2017-Econ Limit

Discount Rate	Econ. Limit (Years)	Econ. Limit (bbl/day)	Value (\$)
PV0	7	7580	\$ 758,235
PV10	7	7580	\$ 648,062
PV20	7	7580	\$ 572,680
PV30	7	7580	\$ 518,555

- Economics based on McNinch Mississippian Typecurve

Discount Rate	Econ. Limit (Years)	Econ. Limit per well (bbl/day)	Value (\$)
PV0	66	4	\$ 5,655,576
PV10	66	4	\$ 2,670,574
PV20	66	4	\$ 1,861,671
PV30	66	4	\$ 1,468,102

Assumptions

- \$50/BBL flat pricing
- \$3000/mo LOE
- 12.5% royalties
- 8% tax rate
- Dry-hole CAPEX: \$180,000
- Oil well CAPEX: \$450,000



ACKNOWLEDGEMENTS

- Dr. Walton
- Kansas Geological Survey Staff
- Kansas Geological Society
- IHS



KU THE UNIVERSITY OF
KANSAS



REFERENCES

- Arps, J. J.**, 1945, Analysis of Decline Curves: Transactions of the AIME, p. 228–247.
- Beebe, B. W.**, 1957, Petroleum geology of the northwestern Anadarko Basin: Congreso Geológico Internacional XX Sesión, Ciudad de México, 1956, sec. 3, p. 41-55.
- Clark, S. K., Arnett, C. L., and Royds, J. S.**, 1948, Geneseo Uplift, Rice, Ellsworth, and McPherson Counties, Kansas; *in*, Structure of typical American oil fields, v. 3: Am. Assoc. Petroleum Geologists, Tulsa, p. 225-248.
- Goebel, E. D.**, 1966, Stratigraphy of Mississippian rocks in western Kansas: Unpub. Ph.D. dissertation, Dept. Geol., Univ. Kansas, 187 p.
- Goebel, E. D., and Merriam, D. F.**, 1957, "Trend players" look to western Kansas Cherokee: Oil and Gas Jour., v. 55, no. 15, p. 126-127, 130-132, 134-135.
- Kansas Geological Survey: Energy**, 2017: The University of Kansas: <<http://www.kgs.ku.edu/PRS/petroIndex.html>> (accessed November 14, 2017).
- Kansas Independent Oil and Gas Association**, 2017, Oil and Gas Drilling Promotions: Costs and Risks: Wichita, Kansas, KIOGA.
- Merriam, D. F.**, 1963, The geologic history of Kansas: Kansas Geological Survey, Bulletin 162
- Mitchell, J.**, 2012, The Anadarko Basin: Oil and Gas Exploration - Past, Present and Future, speech: Tulsa.





REFERENCES CONT'D

Newell, K. D., Watney, W. Lynn, Stephen, W. L. Cheng., and Richard, L. Brownrigg., 1987, Stratigraphic and Spatial Distribution of Oil and Gas Production in Kansas: Kansas Geological Survey, p.2

Ramaker, B. J., 2009, Influence of Mississippian Karst Topography on Deposition of the Cherokee Group: Ness County, Kansas, dissertation: Ann Arbor, Michigan, ProQuest, LLC.

Reservoir Drive Mechanisms, 2016: American Association of Petroleum Geologists: <http://wiki.aapg.org/Reservoir_drive_mechanisms> (accessed November 16, 2017).

Robert F. Walters Digital Geological Library, 2017.: Kansas Geological Society.

Sorenson, R. P., 2005, A dynamic model for the Permian Panhandle and Hugoton fields, western Anadarko Basin: AAPG Bulletin, v. 89, no. 7, p. 921–938.

Walton, A. W., 2017, Geology 535 Lecture, lecture: Lawrence, The University of Kansas.

Watney, W. L., and Paul, S. E., 1983, Oil exploration and production in Kansas--present activity and future potential: Oil and Gas Journal, v. 81, July 25, p. 193-198.





QUESTIONS?

KU THE UNIVERSITY OF
KANSAS